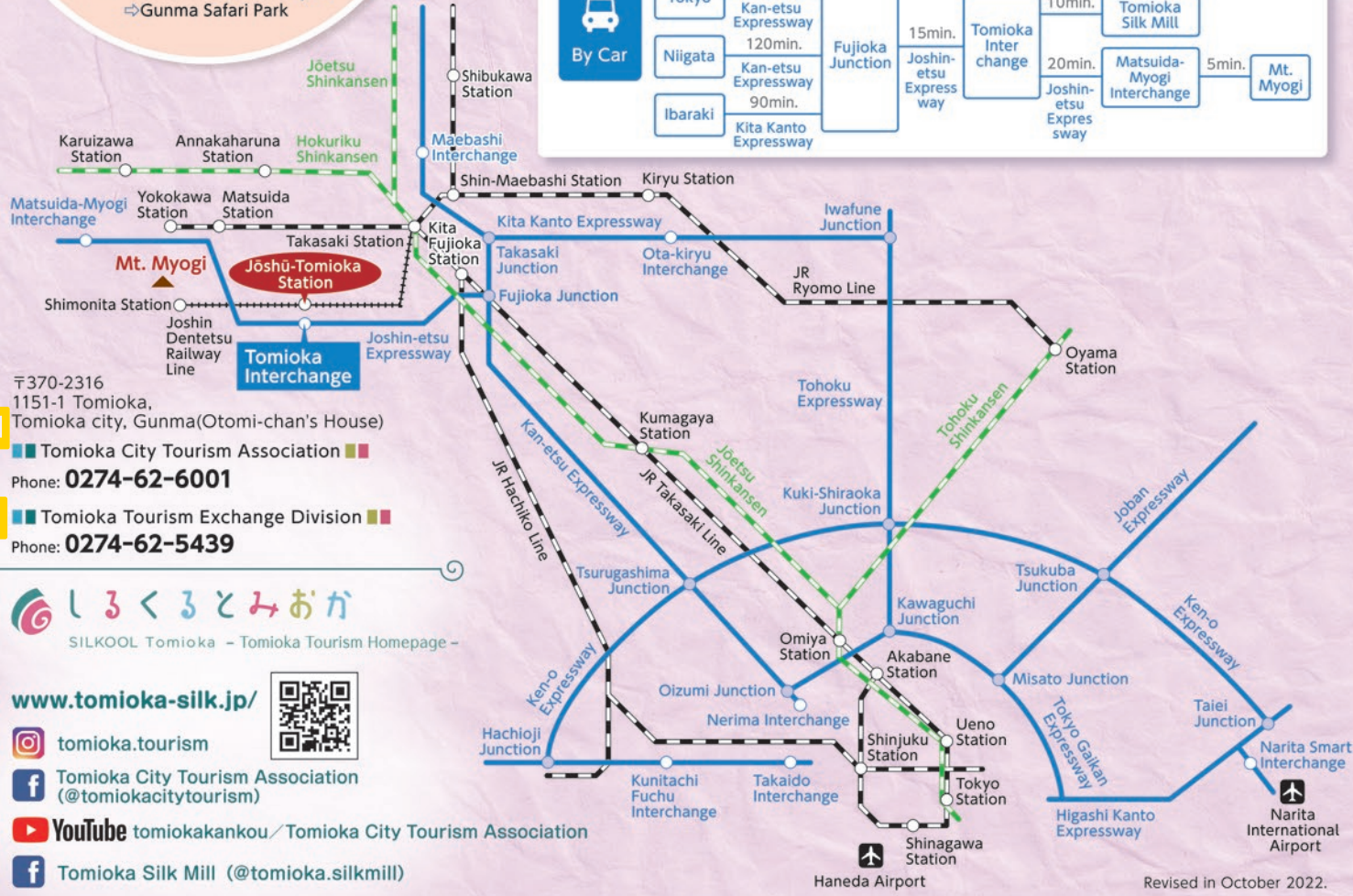




- Historic Sites Trip** By Car
- Tomioka Silk Mill → 10 min. by car → Nukisaki Shrine → 20 min. by car → Myogi Shrine
- Scenic Sites Trip** By Car
- Tomioka Silk Mill → 30 min. by car → Myogi Panorama Park/Momiji no Yu
- Art Tour** By Car On Foot
- Tomioka Silk Mill → 10 min. by car → Gunma Museum of Natural History → 5 min. on foot → Tomioka Art Museum
- Family** By Car
- Tomioka Silk Mill → 15 min. by car → Gunma Safari Park



〒370-2316
1151-1 Tomioka,
Tomioka city, Gunma (Otomi-chan's House)

■ Tomioka City Tourism Association ■
Phone: 0274-62-6001

■ Tomioka Tourism Exchange Division ■
Phone: 0274-62-5439

しろくるとみおか
SILKPOOL Tomioka - Tomioka Tourism Homepage -

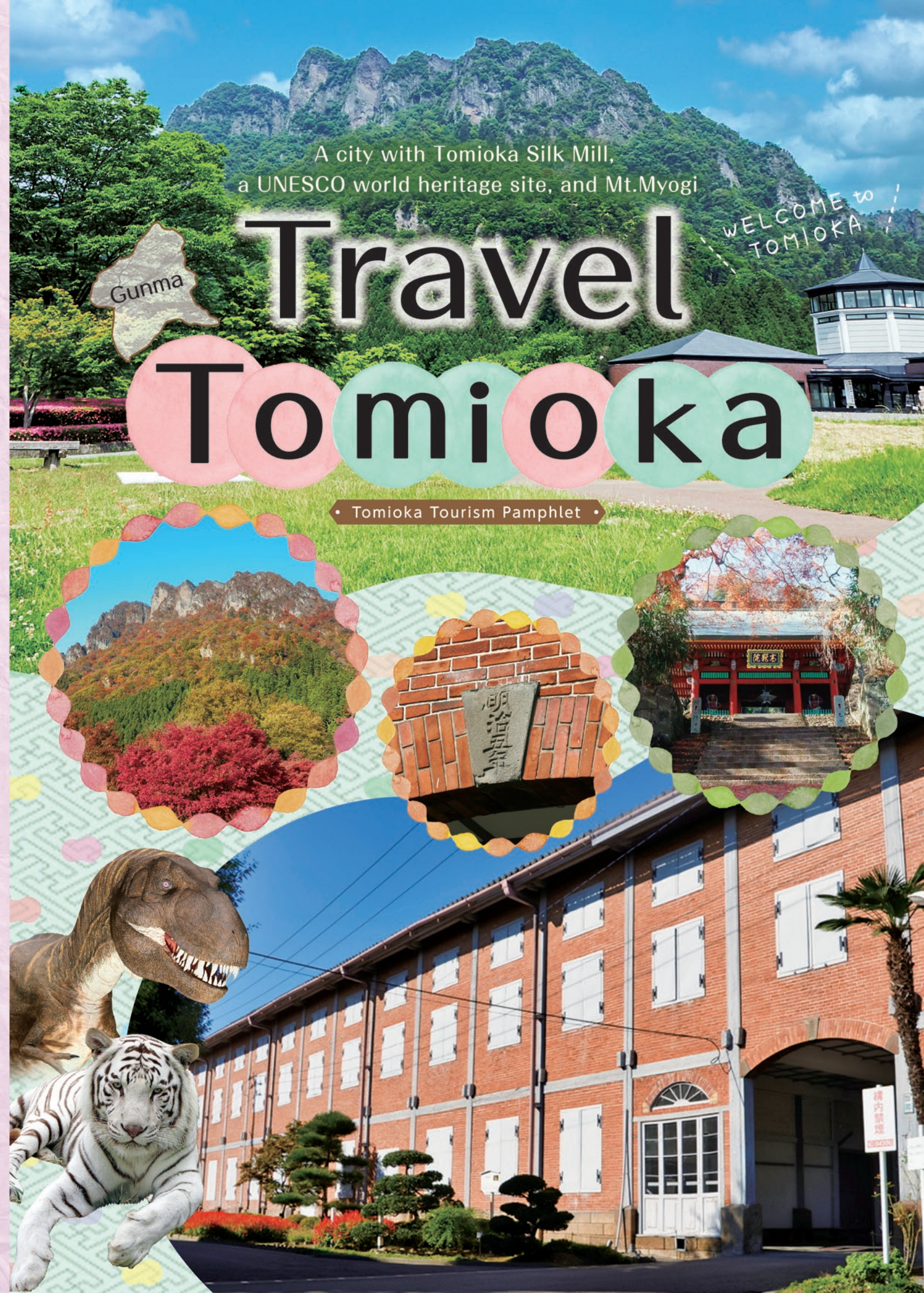
www.tomioka-silk.jp/

tomioaka.tourism

Tomioka City Tourism Association
@tomiokacitytourism

YouTube tomiokakankou/Tomioka City Tourism Association

Tomioka Silk Mill (@tomioka.silkmill)



World Heritage Site
National Treasure

Tomioka Silk Mill

An unchanged atmosphere from the past.
A glimpse at the dawn of the Modern Industrial Age



"Jōshū Tomioka Silk Mill" Color Print
Held in the Tomioka City Art Museum

Free Wi-Fi



*Data charges may apply

Dawn of the Japanese Industrial Age

Founded by the Meiji Government in 1872 (Meiji 5), the Tomioka Silk Mill was a prototype for the manufacturing of silk in Japan's Modern Industrial Age. Following the Meiji Restoration, in order to compete with foreign countries, the government pushed the modernization of science, technology, and industry. As a way to raise funds for this purpose, the government put effort into exporting raw silk. The government decided to create a government-owned model plant equipped with Western-style machines to foster quality improvement, production improvement of raw thread and make Japan a technology leader. That is why the Tomioka Silk Mill was constructed, and remains virtually unchanged.

Admission Fee

Category	Individual	Group reservation
Adult	1,000yen	900yen
High School/University Students ※Must show school ID	250yen	200yen
Elementary/Jr. High Students	150yen	100yen

Open 9:00 a.m. - 5:00 p.m.

※Facility entry closes at 4:30 p.m.

Closed December 29th - 31st

※Occasional closures may occur

📍 1-1 Tomioka, Tomioka-shi ☎ 0274-67-0075 (Information Center)

※Free for preschoolers ※Free for people with a disability certificate and 1 caregiver.
※High school/University students must show their student ID
※Free for Tomioka citizens. You must show a proof of residency. (i.e. driver's license)

Group Admission (Upon reservation only)

Groups must make a reservation (20 or more/group)
Reservations should be made up to 2 days prior to the visit via the homepage.

Guided Tour 3,000yen/Guide (approx. 40-50 minutes)
※Up to 20 tourists per guide

Bus Parking (Upon reservation only) 2,000yen/bus

☎ 0274-67-0088
(Tomioka Silk Mill Group Reservation Center)
<https://www.matidukuri-t.net/reserves/>



※For information on the Tomioka Silk Mill hands-on experience, see Page 7.

Guided tour/ Audio tour for individuals

We recommend a guided tour/audio tour for a more in-depth experience.

Fee About 40 minutes: 200yen/Adult; 100yen/Elementary & Jr. High Students

Start Times 9:30 a.m.; 10:30 a.m.; 11:30 a.m.; 1:00 p.m.; 2:00 p.m.; 3:00 p.m.

※Approx. length/start times may vary
For updated information please check the Tomioka Silk Mill website.



Can be rented
at the ticket counter.
Audio Guide (200yen/device)

A mobile-shaped device
that gives audio explanation
at the push of a button.



[Supported Languages] 日本語・English・Français・中文(简体)・中文(繁體)・한국어

Factory Life Gallery "on display"

This is a replica
of the Brunat Engine,
a steam engine used
when the Tomioka
Silk Mill first opened

Dynamic Display

Saturday,
Sundays, Holidays
10:30 a.m. - 2:30 p.m.
※The above times are
for the dynamic displays



Company residence

The Tomioka Silk Mill
provided a living space
for workers,
with housing
and an infirmary
on the premises
from its founding.

West Cocoon Warehouse

The long-awaited grand opening took place in October 2020, after a long-term maintenance work was completed. The highlight is a framework for seismic reinforcement, and an exhibition room surrounded by glass maintained by the House-in-House method. On top of that, the 1st floor has a 16-meter timeline wall display, and on the 2nd floor you can see how the cocoons were stored throughout its 115-year history. For a more enjoyable experience, download the West Cocoon Warehouse app for a special audio guide on your smartphone.

West Cocoon Warehouse app download (free)

*Data charges may apply

1 Main Guide (5 Languages)

This guide will take you through the various displays and architectural attractions. The Japanese guide is voiced by voice actor Shunsuke Takeuchi.

2 Rōkyoku (Japanese w/ written English Translation)

The second floor attractions are presented through a traditional musical recitation style known as Rōkyoku, or Naniwabushi, through the talent of Rōkyoku Master Daifuku Tamagawa.

Android



iPhone



West Cocoon
Warehouse



Inside
the Silk Mill



Tomioka City Mascot
Otomichan

Former Nirazuka Silk Mill

Located in front of the Tomioka Silk Mill's main gate is the Former Nirazuka Silk Mill, a privately-run silk mill established in October of 1876 (Meiji 9) by Naojiro Nirazuka who contributed to the establishment of the Tomioka Silk Mill. The mill operated until 1879 (Meiji 12). There were about 20 silk mills in Japan modeled after the Tomioka Silk Mill in the early Meiji Period. However, the remains of this building, including its basement, are considered especially important, and therefore most of the buildings and the remaining reeling machine room have been preserved and maintained. Information on the archeological finds, etc. can be found in the Former Nirazuka Silk Mill corner.



Admission Fee Free

Open 9:00 a.m. - 5:00 p.m.

Closed

December 29th - 31st

Access

About a 10-minute walk
from Jōshū Tomioka Station

📍 33-4 Tomioka,

Tomioka-shi

☎ 0274-67-1256

World Heritage Site Visitor Center Sekaito

Located near the Jōshū Tomioka Station, on the way from the free municipal parking lot toward the Tomioka Silk Mill, Sekaito is an excellent museum to explore before your silk mill experience. The museum will help you better understand the value of the silk industry of Japan and the reason why the Tomioka Silk Mill became a World Heritage site.

Aside from the silk mill, the museum introduces three other must-see heritage sites. The over 100 year-old brick warehouse was restored under the supervision of the famous architect Kengo Kuma.

Fee Free **Open** 9:00 a.m. - 5:00 p.m.

Closed

Every last Wednesday, March through November
Every Wednesday, December through February
(Should it fall on a public holiday then the following day will be closed)
December 29th - 31st

📍 1450-1 Tomioka, Tomioka-shi

☎ 0274-67-7821



Theater

Display
Room





Historic Sites
Trip



Scenic Sites
Trip

One of Japan's Best Three
Amazing Views

Mt. Myogi

Your breath
will be taken away
by one of Japan's
100 Best Landscapes

Mt. Akagi, Mt. Haruna and Mt. Myogi are the Three Mountains of Jomo (present day Gunma Prefecture). The awe-inspiring rock formations in the southern peaks of Mt. Hakuun, Mt. Kondo, and Mt. Kinkei--Myogi's Front--and the northern peaks of Mt. Yakyū, Mt. Chosunokashira, and Mt. Mitake --Myogi's Back-- are one of Japan's Best Three Amazing Views. The mountains' incredible rock arches, among others, make a stunning view, especially with the blooming cherry blossoms in spring and the fiery autumn foliage.

Nationally
Designated
Important
Cultural
Properties

Myogi Shrine

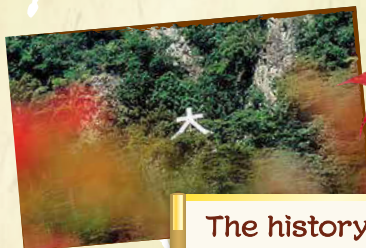


Located on the side of Mt. Hakuun, Myogi Shrine boasts a 1500 year legacy. The traditional "Gongen-zukuri" interconnected design and gorgeous dark paint of the main shrine lies just beyond the brilliant vermillion "Sōmon" and the ornate "Karamon" gate. On the way leading to the shrine stands a beautiful 200-year-old weeping cherry blossom. In recent years the Shrine has been known as a power spot by many.

📍 6 Myogi, Myogimachi, Tomioka-shi ☎ 0274-73-2119

Got to visit
popular
power spots

Mt. Myogi's 4th Rock Arch



Mt. Myogi's Dusk View



The history of the giant "Dai no Ji"

The white character of "Dai(大)" that stands on the side of Mt. Hakuun was a way point for travelers on the Nakasendo route between Kyoto and Tokyo during the Edo period. The character "Dai" is taken from Myogi Daigongen, the ancient name of Myogi Shrine.

Culture and History Tour

Access from Tomioka Silk Mill



Myogi Panorama Park

This popular destination has a gorgeous 360 degree panoramic view of Mt. Myogi (Mt. Hakuun, Mt. Kondo, and Mt. Kinkei), the Kantō Plains to the East, and, if you're lucky, further to the East Mt. Tsukuba. The park also hosts family attractions such as the Tomioka Myogi Furusato Municipal Art Museum, known for the works based on Mt. Myogi, and the Myogi Hot Sping "Momiji no Yu" and its breathtaking view from the open-air baths.



Tomioka City Myogi Furusato Museum

Open 9:30 a.m~5:00 p.m.(Final entry at 4:30 p.m.)

Closed Monday (If Monday is a holiday, Tuesday)
December 27 to January 4

Fee General Admittance: Adult: 310 yen,
High School/College Student: 150yen
Junior High School and younger: Free; Adults 65 years old
and older: 150yen(20% off for groups of 20 or more)

📍 1-5 Myogi, Myogimachi, Tomioka-shi ☎ 0274-73-2585

Enjoy the rare experience from the mixing of art and nature with an Exhibition of winning pieces from the "Mt. Myogi Art Exhibition" contest while viewing Mt. Myogi.



Myogi Fureai Plaza Myogi Hot Spring "Momiji no Yu"



With the open-air bath and sauna facilities, you can enjoy the scenic view of the Kantō Plains with Mt. Myogi behind you at this day-trip hot spring. You can also delight in a meal at the adjoined Miyamatei restaurant.

Open 10:00 a.m~8:00 p.m.
(7:00 p.m. between December, 1
to February 28 (29))

*Final entry: 30 min. before closing
*Business hours are subject to change.

Closed Monday (If Monday is a holiday, Tuesday)
December, 31

Fee General Admittance: Adult
(Junior High School and older): 520yen,
Children: 300yen;
Children not in Elementary School: Free

📍 1-1 Myogi, Myogimachi, Tomioka-shi
☎ 0274-60-7600



Roadside Station Myogi



Buy locally sourced konjac, Shimonita green onions, maitake mushrooms, hand-made miso, and many other foods at the store. The attached restaurant serves maitake mushroom rice and for desert why not try the rotating selection of soft ice cream; a different flavor for each season.

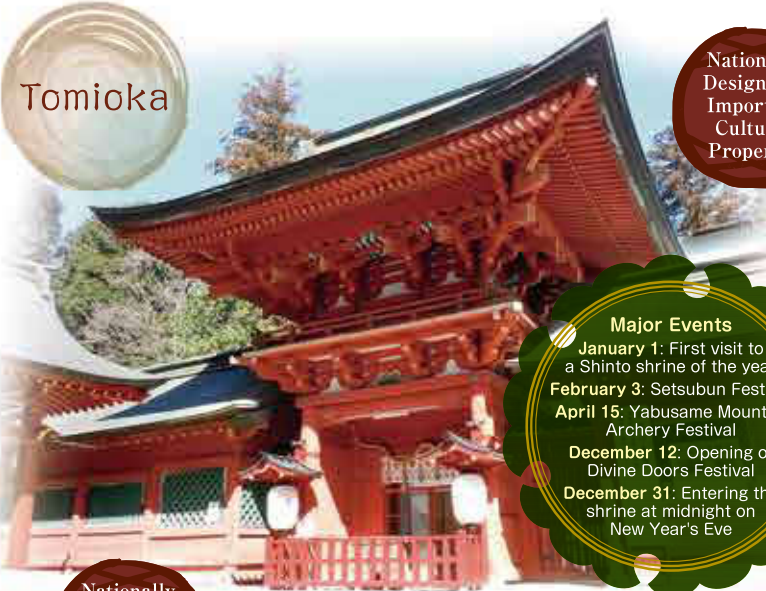
Open 9:00 a.m~5:00 p.m.
(4:00 p.m. between December, 1 to February 28 (29))

Closed Third Wednesday of the month(Open daily in April,
May, October, and November), year-end
*Business hours and holidays change depending on the season.

📍 322-7 Take, Myogimachi, Tomioka-shi ☎ 0274-73-3991

Tomioka

Nationally
Designated
Important
Cultural
Properties



Nationally
Registered
Tangible
Cultural
Property

Social Education Hall

Initially built in 1936 as the Tōgoku Keishin Dōjō, the Social Education Hall was registered as a National Tangible Cultural Property for its historical, cultural, and architectural properties on July 8, 2008. Its Japanese cypress frame and modern-Japanese architectural style calm the soul with its simple yet stately appearance. Cultural events such as concerts and tea ceremonies are held according to the season.

Open 9:00 a.m~5:00 p.m. **Closed** Monday, Holidays, National Holidays, The year-end and New Year holidays

📍 1465-1 Ichinomiya, Tomioka-shi ☎ 0274-62-2033

A unique shrine down the stone steps

Ichinomiya Nukisaki Shrine

Built in the first year of Emperor Ankan's reign in 531, Ichinomiya Nukisaki Shrine is home to the god of military arts, Futsunushi-no-kami and the god of agriculture and weaving, Hime-oookami. The main shrine, worship hall, and tower gates have all been rebuilt by the third Shogun Tokugawa Iemitsu in 1635 and extensively repaired by the fifth Shogun Tokugawa Tsunayoshi. The main shrine is built on a descending slope, a rare design for Shinto shrines, making it one of the Three Descending Shrines and listed in the classical English Book as one of Japan's major Shinto shrines. The surrounding thousand-year-old trees give Ichinomiya Nukisaki Shrine a majestic atmosphere.

📍 1535 Ichinomiya, Tomioka-shi
☎ 0274-62-2009



Access from Tomioka Silk Mill



Experience
natural art spun
in the loom of time.

Gunma Museum of Natural History

**See the intensity of a
full-scale T-rex coming to life!**

You'll have a fun time learning about Earth's history, the evolution of life and nature, and Gunma's ecosystem and environment. Japan's best dinosaur fossils exhibition.

OMG
Dinosaurs!



Open 9:30 a.m.-5:00 p.m. (Final entry at 4:30 p.m.)

Closed Monday (If Monday is a holiday, Tuesday),
The year-end and New Year holidays, Other Temporary Holidays.

Admission Fee General Admittance: Adult: 510 yen, High School/University Student: 300 yen,
Junior High School and younger: Free
Groups of 20 or more: General Admittance: 410 yen,
High School/University Student: 240 yen, Junior High School and younger: Free

*Reservations (Please make reservations on the homepage) *Separate fee during special exhibitions
*Admittance is free for people with a Physical Disability Certificate, people with a Certificate of Intellectual
Disability, people with Mental Disability Certificate, and 1 caregiver.

▲ 1674-1 Kamikuroiwa, Tomioka-shi ☎ 0274-60-1200

Art Tour

Family

The
Wild Kingdom

Gunma Safari Park

Access from Tomioka Silk Mill



**Feel the rush
of the wild up close!**

The large park hosts almost free animals in their near natural environment. An only window separates you from the lions, zebras, giraffes, rhinos, and other animals. The Park is also the only place in Japan to see Sumatran elephants and is home to the largest streak of white tigers.

Feel the thrill of feeding
wild American bison, elk, lions,
and other animals while riding
the popular "Pakkun"!



Open March, 1~October, 31; 9:30 a.m.-4:00 p.m. (Park closes at 5:00 p.m.)
November, 1~February, 28 (29);
Weekdays: 9:30 a.m.-3:00 p.m. (Park closes at 4:00 p.m.)
(Weekend and Holidays) 9:30 a.m.-3:30 p.m. (Park closes at 4:30 p.m.)

Closed Wednesday (Open during Spring break, Golden Week break, and Summer break)
(Depending on the season, the Park may be closed on days other than Wednesday)
*Hours and closed days are subject to change without notice
For more information please refer to the homepage or call the Park.

Admission Fee General Admittance: Adult (high school Student and older): 2,700yen,
Children (between 3 years old and Jr.High student): 1,400yen
Adults 65 years old and older: 1,900yen

*Admittance is half price for people with a Physical Disability Certificate,
people with a Certificate of Intellectual Disability, and people with Mental Disability Certificate.
*For people 65 years old and older, please provide documentation of date of birth.
*Please note that business hours, closing days, fees, etc. are subject to change
without notice. For more information, please visit Gunma Safari Park website.

▲ 1 Okamoto, Tomioka-shi ☎ 0274-64-2111
<https://www.safari.co.jp>



So many
rare animals!



Kids



The amusement park adjacent to the Safari Park is a fun time for families with rides small children to adults can enjoy.

Gifts you can only
find here!



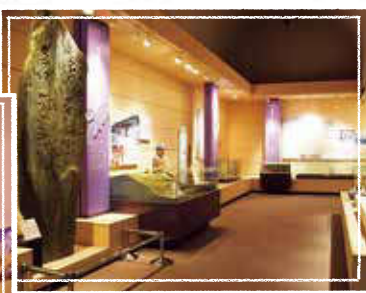
From stuffed animals and animal figurines to animal biscuits and animal cookies! Why not make it the perfect souvenir?

Encounter beautiful local works of art. Tomioka City Art Museum and Ichiro Fukuzawa Memorial Gallery

Take a trip through Tomioka's archaeological, historical, and folk art, as well as journey through contemporary and modern art of local and renowned artists. Visit the wing dedicated to Ichiro Fukuzawa, an artist born in Tomioka.



FUKUZAWA Exhibition Wing



Tomioka Regional Exhibition

Open 9:30 a.m.-5:00 p.m. (Final entry at 4:30 p.m.)

Closed Monday (If Monday is a holiday, Tuesday),
The year-end and New Year holidays, Other Temporary Holidays.

Fee General Admittance: Adult: 210 yen, Adult over 65 years old/High School/
University Student: 100 yen, Junior High School and younger: Free
20% off for groups of 20 or more (about 160 yen for 1 person)

*Separate fee during special exhibitions
*Admittance is free for people with a Physical Disability Certificate, people with a Certificate of Intellectual
Disability, people with Mental Disability Certificate, and 1 caregiver.

▲ 351-1 Kurokawa, Tomioka-shi ☎ 0274-62-6200



Only in Japanese

Discover new attractions! Central Tomioka Guided Tours

The tour around Tomioka includes local street food as well as admission tickets into the Tomioka Silk Mill.

Tomioka Silk Mill admission tickets included.

Open Closed on Wednesdays
Time About 90 minutes
Fee Adults: ¥3,000
Children: (students) ¥2,200
[5 & under FREE]
※Tomioka Silk Mill admission not included for students
Contact Tomioka City Tourism Association
☎0274-62-6001



Street Food Menu

- Kuwakko Manjū
 - Oyaki
 - Japanese Style Kinu-Shumai
 - Silk Milk
 - Silk Okaki
 - Horumon-age
 - Mayukuwa Monaka
- 5 items will be served among the above list.



Experience making silk Make a Silk Frame Decoration

Experience silk reeling inside the Tomioka Silk Mill Company Residence and make your original silk frame decoration. It makes a wonderful souvenir or gift. Kids can also join in the fun.♪



Open Closed December 29th-31st. Reservations only Party up to 3 persons (up to 2 chaperones)
Time 10:00 a.m. & 2:00 p.m.
Fee ¥2,000/person (Handmade Souvenir Included)
Place: Tomioka Silk Mill Company Residence 76
Contact Old Nirazuka Silk Mill (Machizukuri Tomioka S.A.) ☎0274-67-0075
※In times of high attendance there is a chance you may not be able to make a souvenir.

Perfect for sightseeing around the Silk Mill

Sightseeing Travel Information

Free Ride Sightseeing Tour Bus

Convenient to travel between the train station and the Tomioka Silk Mill. The ride is free and a guide will also give interesting information in Japanese about the landmarks as you go. (bus limit: 8 persons)

Operating Hours 9:00 a.m. - 4:00 p.m.
About 30 minutes (one full loop)
Fee Free

First Bus Tomioka Station East Parking 9:00 a.m. departure.
One bus every 40 minutes. (10 buses/day)

Contact Machizukuri Tomioka S.A. ☎0274-67-0103



Rent Free Sightseeing bicycle "Raku-Raku Otomi"

"Raku-Raku Otomi," Otomi-chan's highly-recommended sightseeing bicycle comes equipped with a pedal-assist electric motor, making those pesky hills easy to climb. If you feel like stretching out your legs and have a handy mode of transportation, this is it.

Utilization Time 9:00 a.m. - 4:30 p.m. (reception until 3:00 p.m.)
Age Limit For adult use (Jr. High age and up). However, under proper guardian guidance elementary-age children may use it.

How to Use: Fill out an application form at the "Otomi-chan House" Sightseeing Information Center. You will need to show an ID card (i.e. driver's license).
Contact Tomioka City Tourism Association ☎0274-62-6001



Effortless!

Enjoy Tomioka City's Tomioka Gourmet

Local Gourmet Eats!

B grade gourmet consisting of fried fish cake smothered in sweet & spicy sauce.♪

Horumon-age

Open-flamed, fluffy, chewy treat that's great even when cold. Perfect for eating on the go.

Kaiko Yaki

The pride flavor of Jōshū Province! A fried pork cutlet covered in a sweet sauce layered over a bowl of rice! One bite and you'll be addicted!

Taré Katsu Dōn

Famous Jōshū local cuisine

Okkirikomi

Nostalgic "Oyaki" meets "Manjū"

Oyaki

All around the Tomioka Silk Mill are restaurants and cafés that use local ingredients and deliver an old-fashioned atmosphere.

TOMIOKA SILK BRAND

Tomioka-made silk products that breathe tradition and history

100% Tomioka Silk



Tomioka Silk Product Stores
Tomioka Silk Gallery
(inside the Tomioka Silk Mill)



Tomioka Silk Brand has two qualities.

Tomioka Silk Platinum Mark

This mark means the product is made from 100% specifically-selected Tomioka Silk, made in Japan. The design and manufacturing is also approved by the Tomioka Silk Brand Committee.

Tomioka Silk Mark

This mark means the product is made from selected cocoons, made in Japan.

Mulberry-made gifts/souvenirs



Tomioka Silk Mill's
cherry blossom

Tomioka Flower Calendar

A beautiful view of nature

City's flower Cherry Blossoms

From Tomioka Silk Mill to Nukisaki Shrine, Tomioka is known for its cherry blossoms. In spring, all the cherry blossoms in the local parks, lakes, shrines and schools are in full bloom.

- Weeping cherry blossom Myogi Shrine, Ryukōji Temple, Pine Tree (Myogi)
- Yoshino cherry blossom Tomioka Silk Mill, Joyama Park, Nukisaki Shrine, Oshio Lake, Nyu Lake



April

Cherry Blossoms
in Nukisaki Shrine



June

Hydrangeas
at Oshio Lake



July

Ancient Lotuses in the
Kannari district



August

Sunflowers
at Nyu Lake

Weeping
Cherry Blossom
in Myogi Shrine



May

Azaleas
in Miyazaki Park

Chinese Peonys
in Tomioka
Chinese Peony Garden



Niagara Wisterias in
Kurosawa Wisteria Park

November

City's tree
Japanese maple

Momijidaira Park takes its name from the maple (Momiji) seen on the many roadside trees in Tomioka. Mt. Myogi's fiery autumn foliage is described as "Mt. Myogi, shining in crimson maple leaves" in the Jomo Karuta Poetry card game.

Mt. Myogi's
Autumn Foliage

Family

Passing
on **history**
Weaving
memories
Tomioka's
traditions



Yearly Events

January	1	First visit to a Shinto shrine of the year (Nukisaki Shrine, Myogi Shrine, etc.)
	Second Sunday of the month	Kitamuki Kannon Festival (Oshima district)
	Mid-month	Dondo purification burning of New Year decorations
	Third Sunday of the month	Kokuzō Festival (Hoshida district)
February	3	Setsubun Festival (Nukisaki Shrine and other locations)
March	Last Sunday of the month (Even Years)	Dōsōshin Float Festival (Ichinomiya district)
	Sunday at the bottom of the Month (Ichinomiya District)	Sugahara Shrine Spring Festival (Sugahara district)
April	Top of the Month	Cherry Blossom viewing (Tomioka Silk Mill)
	First Sunday of the month	Suwa Shrine Festival (Tomioka district)
	Second Sunday of the month	Oshio Shrine Festival (Minami Goka district)
	8	Tokujōji Temple Festival (Ainota district)
	15	Jagū Shrine Festival (Nanokaichi district)
		Myogi Shrine Festival (Myogi district)
		Yabusame Mounted Archery Festival (Nukisaki Shrine)
	22	Kokuwa Kannon Festival (Kokuwabara district)
May	1	Start of Mt. Myogi hiking/climbing season
	Mid-month	Mt. Myogi View Ride

Tomioka Festival Guide



Tomioka Donto Festival

With 20 floats, 2000 traditional dancers, and children's portable shrines this is Tomioka's largest festival.

Oshima Fire Festival

Tracing its roots to the 108 lanterns hung during the Obon Ancestor Festival, residents of Tomioka represent their hopes and wishes as a specially selected Japanese character and light it for all to see. With the fireworks display, the festival has a wondrous atmosphere.

July	24	Magatto Washing of Bad Luck (Takase Shrine)
	Bottom of the month	Tomioka Summer Festival (Urban district)
August	Top of the Month	Mt. Myogi Mountain Day Event
	16	Oshima Fire Festival (Oshima district)
		Tomioka Firework Festival (Wago Athletic Park)
	27-28	Narusawafudōson Festival (Kaminyu district)
September	First Sunday of the month	Mt. Sekison Festival (Nanjai district)
October	Mid-month (Every other year)	Tomioka Donto Festival (Urban district)
	Sunday at the bottom of the Month	Sugawara Shrine Autumn Festival (Sugawara District)
November	3	Mt. Myogi's Autumnal Foliage Festival (Myogi Shrine and other locations)
	12	Kishibojin children's Health Festival (Honjōji Temple)
	14	Ojuya 10 Day Prayer (Ryukōji Temple)
December	12	Opening of Divine Doors Festival (Nukisaki Shrine)
	Second Sunday of the month	Gunma Safari Tomioka Marathon
	30-31	Eishinji Temple Hibusefudōson Festival (Nanokaichi district)
	31	Entering the shrine at midnight on New Year's Eve (Nukisaki Shrine, Myogi Shrine, and other local shrines)

Overnight accomodations Tomioka Lodging in Tomioka

Tomioka Area				Near UNESCO World Heritage Tomioka Silk Mill, museums, and retro-style cafés	
1	Yukifumi Guest House	457-3 Shimonyu, Tomioka-shi	0274-67-3875	15 min. by car from Tomioka Interchange	
2	Hotel Amuse Tomioka	245-1 Tomioka, Tomioka-shi	0274-64-3636	3 min. by car from Tomioka Interchange, 15 min. on foot from Jōshū-Tomioka Station	
3	Rustic Guest House Hinata	337-1 Nakazawa Aza Hinata, Tomioka-shi	0274-67-2191	5 min. by car from Shimonita Interchange, 12 min. on foot from Nanjai Station	
4	MABUSHI-ya	28-5 Tomioka, Tomioka-shi	0274-62-0149	5 min. by car from Tomioka Interchange, 2 min. on foot from Jōshū-Tomioka Station	
5	Tomioka Club	621-1, Fujiki, Tomioka-shi	0274-64-3311	20 min. by car from Tomioka Interchange	
6	MORIZO	23-2 Tomioka, Tomioka-shi	0274-62-5781	8 minutes by car from Tomioka IC	
Myogi Area				You'll have a beautiful view of one of Japan's Three Beauties, Mt. Myogi, during any season of the year.	
7	Hishiya Inn	42 Myogi, Myogimachi, Tomioka-shi	0274-73-2311	5 min. by car from Matsuida-Myogi Interchange	
8	Toukan Inn	36 Myogi, Myogimachi, Tomioka-shi	0274-73-2221	5 min. by car from Matsuida-Myogi Interchange	
9	Myogi Green Hotel & Terrace	2678 Sugawara, Myogimachi, Tomioka-shi	0274-73-4111	15 min. by car from Matsuida-Myogi Interchange	

